

Hike to the Museum

Plan a day hike along the T.M.R. Trail to the Museum at Headquarters Camp.

Matinee Museum Lunch

Units planning to spend several hours or the day at the Museum can always eat their lunch in the Museum's picnic area. This is particularly recommended if you want a Museum Tour and do some geocaching and/or follow the C.C.C. Camp Ten Mile River historic walk or the G.P.S. walk. Here's how to do it:

- Ask your camp's Program Director to call the Museum to reserve time for your Unit and let us know which program(s) you want to do. You can also call us directly to schedule a visit.
- At least 48 hrs. before your Museum visit, submit through your Camp Program Director a requisition form for either a cooking lunch or a bag lunch.
- You can pick up your lunch order from your camp before leaving for the Museum when you first arrive at Headquarters Camp.
- Your Scouts can complete the requirements for Scouting History Merit Badges.

2017 Operating Schedule

- Monday-Friday: 9:00 a.m. - 12:00 Noon, 1:00 p.m. - 5:00 p.m., 7:00 p.m. - 9:00 p.m.
- Saturday: 8:00 am - 3:00 pm.
- Sunday: 1:00 p.m. - 5:00 p.m.
- Open by special appointment.

Contact the T.M.R. Scout Museum

Mail - Ten Mile River Scout Museum, c/o Greater New York Councils, B.S.A., 350 Fifth Ave., Suite 7820, New York, NY 10118.

Phone - (July & August only):

- 845-252-2063 (T.M.R. internal phone system).
- 845-252-3775 (Public phone number).

E-Mail - questions@tmrmuseum.org.

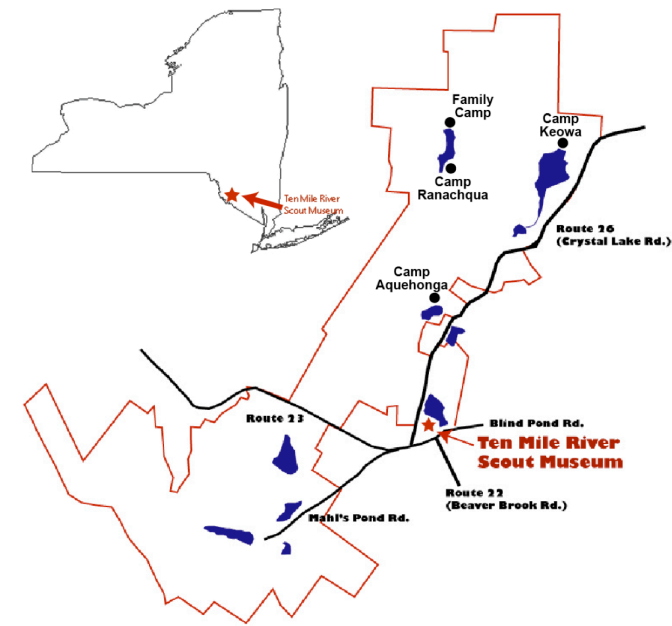
Web Site - www.tmr-museum.org.



Facebook - www.facebook.com/TMRMuseum
Museum Director - deaconpaul430@verizon.net or call 845-527-5407.
Co-Director - ramapos@aol.com.

Location

The Ten Mile River Scout Museum is located in T.M.R.'s Headquarters Camp, at 1481 County Road 26 (Crystal Lake Road), just north of State Road 23/Blind Pond Road, in Sullivan County, NY. The nearest major town is Narrowsburg, NY.



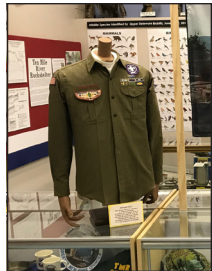
Visit The "New" Ten Mile River Scout Museum In 2017



In commemoration of our 20th anniversary, the Ten Mile River Scout Museum has been totally upgraded with professional-style exhibits covering the entire history of the Ten Mile River Scout Camps, local wildlife, local pioneering era, archeology, and New York City Scouting. Major improvements include: professionally printed and hung photos, hanging photo-banners, a new neckerchief slide display and upgraded patch and scouting memorabilia displays.

Museum Tour (60 min.)

First-time visitors typically go on a one-hour tour of the Museum. You will see a nine-minute video on the origin of the Ten Mile River Scout Camps. Find out about the Kanohwahke Scout Camps, where N.Y.C. Scouts camped before T.M.R. See historical memorabilia from all the T.M.R. camps. You will see artifacts from the T.M.R. Rockshelter, a 2,000 year-old Native American encampment. Find out about the





Donut Farm and see the Donut Machine. See and touch artifacts from the lumbering and rafting era of the Upper Delaware River Valley.



A nine-minute video depicts camp life in the Brooklyn Scout Camps. Visit a mini-museum with artifacts from typical camp life and Scout uniforms on mannequins.

Museum Historian Patch

The Museum Historian patch can be earned by completing the requirements with just one tour of the Museum. Best of all, it is free to Scouts and can be purchased by Scouters for a nominal charge.



Museum Store

Our expanded and redesigned Museum Store has a huge variety of Boy Scout memorabilia on sale at rock-bottom prices, including O.A. flaps and backpatches, C.S.P.s, neckerchiefs, Norman Rockwell plates, Scouting posters, bolo ties, mugs, hats, camp patches and Scouting literature, including a variety of Scouting magazines and merit badge pamphlets.



We also have lots of old Scout Uniform parts, National Jamboree and Philmont neckerchiefs for sale and the very popular \$1 and \$2 patch boxes.

Picnic Facilities

Our picnic area has drinking water, a Port-A-San, three charcoal stoves and picnic tables.



Outdoor Programs

The Museum has a variety of outdoor programs that your Unit can participate in, depending on your interests and available time. You can do one or more programs during the same visit. Ask your camp's Program Director to call the Museum to reserve time for your group and let us know which program(s) you want to do. You can also schedule a visit for your Unit by calling us directly.



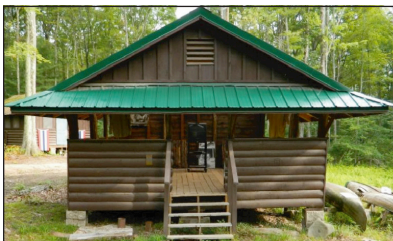
Kernochan Blockhouse (10-15 min.)

Visit a two-level pioneer-era (1750s) reproduction miniature blockhouse. See copies of common items that were typically used during the pioneering era. Find out how blockhouses were used and what pioneer life was like in the Upper Delaware River Valley.



Cayuga/Kotohke Cabin (20-25 min.)

A recreation of life in an actual Brooklyn Scout Camps open-air cabin from the 1930s and 1940s, complete with bunks and straw ticks. Oversized photos depicting cabins and tents from this era.



C.C.C. Camp Ten Mile River Walking Tour (60+ min.)

See a short video on the history of the Civilian Conservation Corps, a depression-era public relief program that made major physical improvements at T.M.R. during the 1930s. Visit the sites of key buildings of the C.C.C. Camp Ten Mile River, which operated from 1933-1936. The sites are marked and lead you on a short walk around the back of Headquarters Camp, ending at the Museum. The tour guidebook shows you the tour route and includes history and photos for each stop.



Geocaching (2 hrs. or less)

Geocaches are treasure boxes hidden in the woods, some in plain sight and some very hard to find. Receive a brief introduction at the Museum on how to use a handheld GPS unit and geocaching. Following the list of coordinates, use the GPS units to find geocaches around Turnpike Lake. At each geocache, the group is encouraged to take a trinket out but you must put something in.



Volleyball/Blind Man's Maze

Scouts can play volleyball in the Museum's picnic area or wander through a nearby Blind Man's Maze.

